

Sulfur Analysis with Compliance Flexibility

Sindie® 2622 Gen 3 complies with ASTM D2622, D7039 and ISO 20884 methods, enabling complete flexibility in sulfur analysis. With no compromises in detection, performance and reliability, Sindie 2622 is the ideal sulfur analytical solution from ultra low sulfur diesel and gasoline to heavy fuel oil and crudes.

Applications

- Total sulfur analysis from ultra low sulfur fuels to crudes
- For use in refinery labs, pipeline terminals, additive plants and inspection laboratories

Features and Benefits

- LOD: 0.15 ppm at 300 s
- Dynamic Range: 0.15 ppm - 10 wt%
- Easy to use
 - Intuitive touch screen
 - Just plug-in and measure
 - Measurement time: 30-900 s
- Low and high range calibrations available:
 - Low Range: 0.15 ppm - 3000 ppm
 - High Range: 0.3 wt% - 10 wt%
- Extremely low maintenance: no conversion gasses, heating elements, columns, or quartz tubing
- 75 W air-cooled excitation tube
- Fits on any lab bench
- Use Accucells for hassle-free sample prep

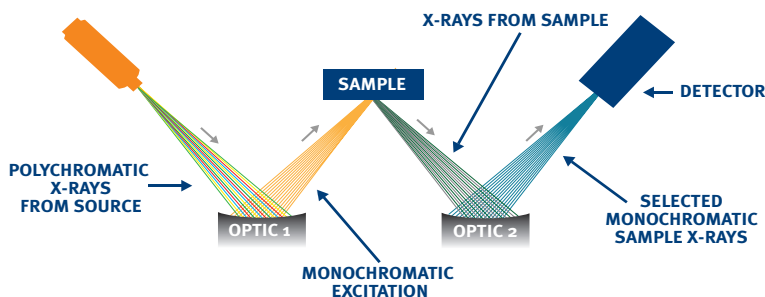
Options

- 8-cell Autosampler
- Helium optical path available
- LIMS data output compatible software



TRUSTED PRECISION

Monochromatic Wavelength Dispersive X-ray Fluorescence (MWDXRF®) utilizes state-of-the-art focusing and monochromating optics to increase excitation intensity and dramatically improve signal-to-background over high power traditional WDXRF instruments. This enables significantly improved detection limits and precision, and a reduced sensitivity to matrix effects. A monochromatic and focused primary beam excites the sample and secondary characteristic fluorescence X-rays are emitted from the sample. A second monochromating optic selects the sulfur characteristic X-rays and directs these X-rays to the detector. MWDXRF is a direct measurement technique and does not require consumable gasses or sample conversion.

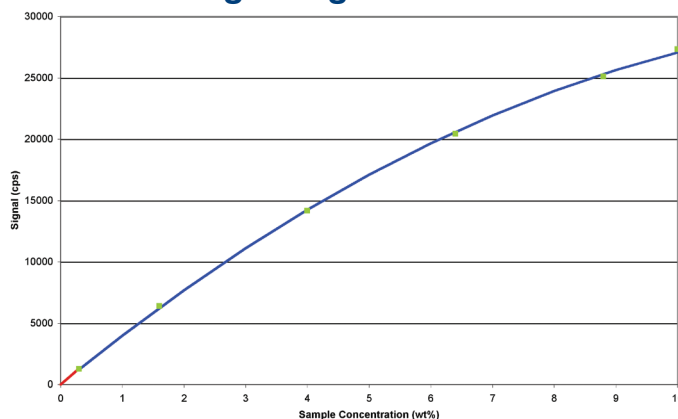


ACCUCELL SAMPLE CUPS

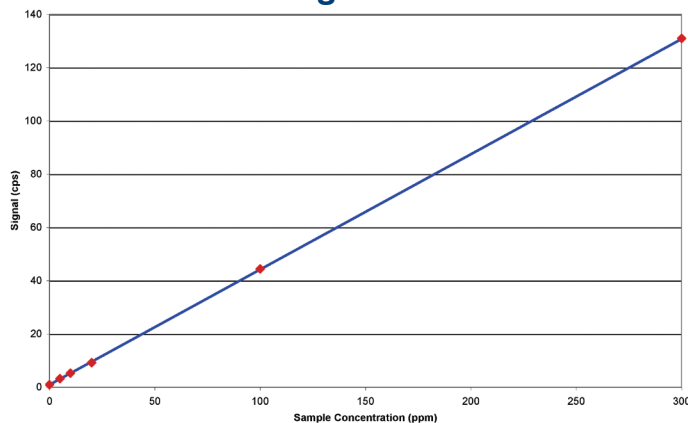
- No assembly of separate film & cup components
- Pre-vented sample cups
- Eliminates sample & cup contamination
- One discharge of 1 ml pipette will fill the cup

Precision		
Typical repeatability (r) and reproducibility (R) values in diesel fuel, at 95% confidence. 300 s measurement time.		
Sulfur Concentration (ppm)	r	R
2	0.3	0.7
5	0.5	0.8
8	0.6	1.0
15	0.8	1.4
100	2	4
500	5	10

High Range Calibration



Low Range Calibration



Sindie uses a weighted least squares regression in low range which is extremely linear and easy to set up. Typical correlation (R value) is expected to be on the order of 0.999 or better.

Product Specifications

Model	Sindie 2622 Gen 3
Test Method	ASTM D7039, D2622 and ISO 20884
Dimensions	37 cm (w) x 50 cm (d) x 34 cm (h)
Power	100-120 VAC, 47-63 HZ at 6.0 Amps/ 200-240 VAC, 47-63 HZ at 6.0 Amps
Sample Cup Volume	1 ml
Ambient Temperature Requirements	5-40° C (40-104° F)
Dynamic Range	Standard: 0.15 ppm - 10 wt%
Measurement	User selectable: 30-900 s
Calibration	8 calibration curves. Automatic and manual calibration functionality
Optical Path	Vacuum (helium available)



better analysis counts



PL 16 (Palokorvenkatu 2), 04261 Kerava • puh. 010 417 4500 • hyxo@hyxo.fi • www.hyxo.fi

15 Tech Valley Drive, East Greenbush, New York 12061 USA
PH 518.880.1500 FAX 518.880.1510 info@xos.com xos.com

©XOS all rights reserved. Sindie and MWDXRF are registered trademarks of XOS.

