

Sulfur Analysis with Unprecedented Precision

From ultra low sulfur diesel and gasoline, to heavy fuel oil and crudes, Sindie® 7039 Gen 3 delivers improved precision and accuracy. Sindie 7039 is the ideal analytical solution for the refining industry where detection, performance and reliability are critical.

Applications

- Total sulfur analysis from ultra low sulfur fuels to crudes
- For use in refinery labs, pipeline terminals, additive plants, testing vans and inspection laboratories

Features and Benefits

- LOD: 0.15 ppm at 300 s
- Dynamic Range: 0.15 ppm - 3000 ppm
- Use Accucells for hassle-free sample prep
- Easy to use
 - Intuitive touch screen
 - Just plug-in and measure
 - Measurement time: 30-900 s
- Extremely low maintenance: no conversion gasses, heating elements, columns, or quartz tubing
- 75 W air-cooled excitation tube
- Fits on any lab bench

Options

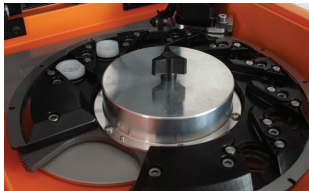
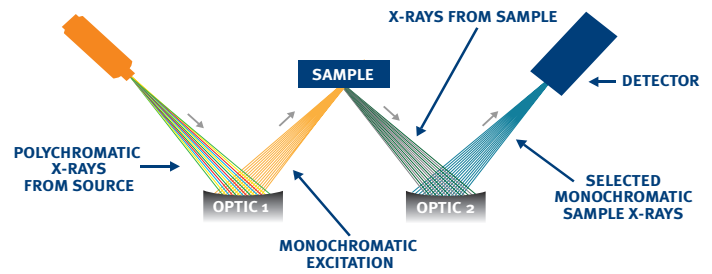
- Extended Range (XR): 0.3 wt% - 10 wt%
- 8-cell Autosampler
- LIMS data output compatible software

16 32.06
Sindie 7039
Sulfur Analyzer



TRUSTED PRECISION

Monochromatic Wavelength Dispersive X-ray Fluorescence (MWDXRF[®]) utilizes state-of-the-art focusing and monochromating optics to increase excitation intensity and dramatically improve signal-to-background over high power traditional WDXRF instruments. This enables significantly improved detection limits and precision, and a reduced sensitivity to matrix effects. A monochromatic and focused primary beam excites the sample and secondary characteristic fluorescence X-rays are emitted from the sample. A second monochromating optic selects the sulfur characteristic X-rays and directs these X-rays to the detector. MWDXRF is a direct measurement technique and does not require consumable gasses or sample conversion.



AUTOSAMPLER

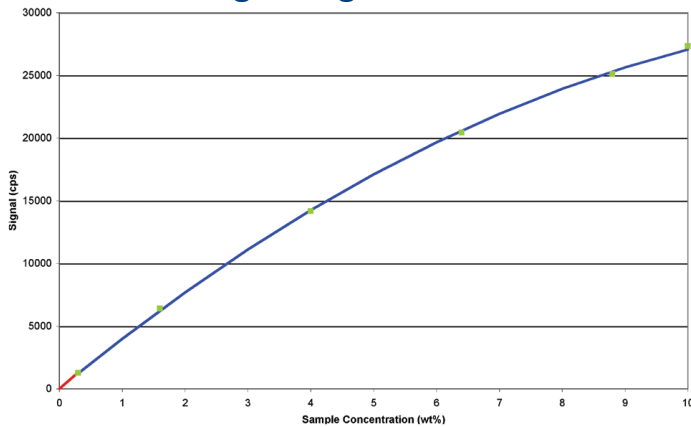
- 8 sample cell capacity
- Increases productivity
- Utilizes XOS Accucell sample cups



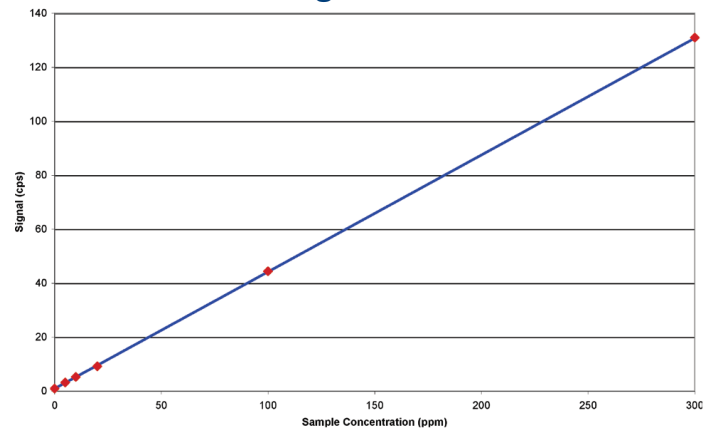
ACCUCELL SAMPLE CUPS

- No assembly of separate film & cup components
- Pre-vented sample cups
- Eliminates contamination
- One discharge of 1 ml pipette will fill the cup

High Range Calibration



Low Range Calibration



Product Specifications

Model	Sindie 7039 Gen 3
Test Method	ASTM D7039 and ISO 20884
Dimensions	37 cm (w) x 50 cm (d) x 34 cm (h)
Power	100-120 VAC, 47-63 HZ at 6.0 Amps/ 200-240 VAC, 47-63 HZ at 6.0 Amps
Sample Cup Volume	1 ml
Ambient Temperature Requirements	5-40° C (40-104° F)
Dynamic Range	Standard: 0.15 ppm - 3000 ppm Extended Range (XR): 0.3 wt% - 10 wt%
Measurement	User selectable: 30-900 s
Calibration	8 calibration curves. Automatic and manual calibration functionality

Precision

Typical repeatability (r) and reproducibility (R) values in diesel fuel, at 95% confidence. 300 s measurement time.

Sulfur Concentration (ppm)	r	R
2	0.3	0.7
5	0.5	0.8
8	0.6	1.0
15	0.8	1.4
100	2	4
500	5	10



better analysis counts

HyXe Oy PL 16 (Palokorvenkatu 2), 04261 Kerava • puh. 010 417 4500 • hyxo@hyxo.fi • www.hyxo.fi

15 Tech Valley Drive, East Greenbush, New York 12061 USA
PH 518.880.1500 FAX 518.880.1510 info@xos.com xos.com

©XOS all rights reserved. Sindie and MWDXRF are registered trademarks of XOS.

