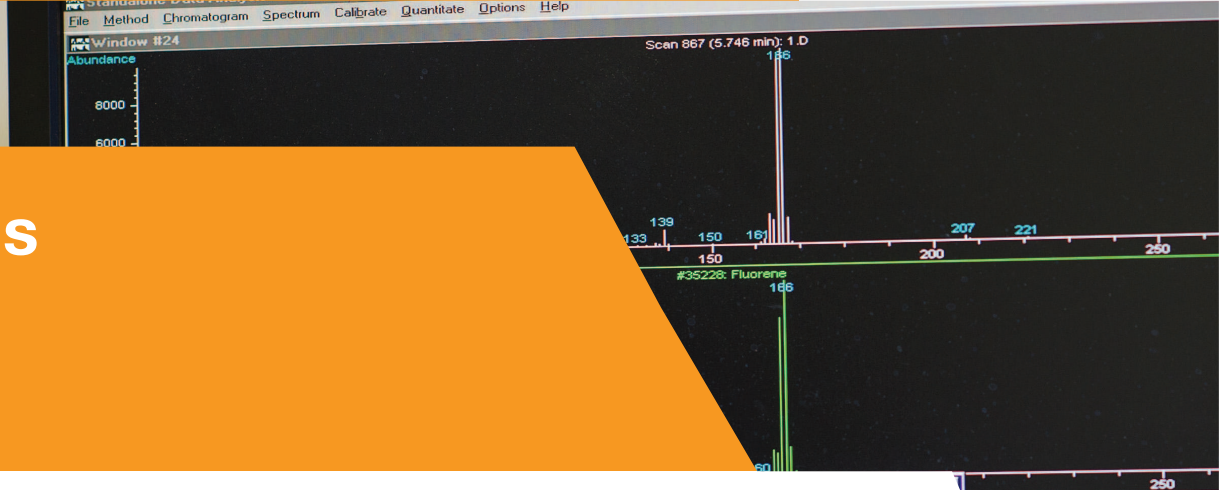


Phenols



Summary of Features & Benefits:

Commercial Benefits

- Ready to use (dilute for use as calibration and/or quality control standards)
- Extensive range of organic compound mixes and single compound standards available
- Can be used with a variety of instruments including GC, GC-MS, HPLC and LC-MS
- Designed specifically for use in EPA or EU analytical methods
- Presented in high quality amber ampoules
- Customised formulations available

Technical Benefits

- Produced in accordance with EPA methods
- Consistency of product - Independent, Traceable, Certified
- Ideal for use in EPA 500, 600 and 8000 series methods
- Certificates of Analysis and Safety Data Sheets available online
- Customised formulations available

These products are prepared gravimetrically on a weight/weight basis. Both solute and solvent are weighed on a balance calibrated by Reagecon engineers using OIML traceable weights. Reagecon holds ISO 17025 accreditation for calibration of laboratory balances (INAB ref: 265C). The resulting Balance Certificate of Calibration is issued in accordance with the requirements of ISO/IEC 17025. The concentration of each standard is verified using an ISO 17025 accredited test method on a high performance calibrated Gas Chromatograph - Mass Spectrometer (GC-MS Instrument). The calibration of the GC-MS instrument is completed using high purity ISO Guide 34 accredited Phenol standards from a secondary source similar in Phenol concentration value to these products. The mass spectrum of each of the analytes is confirmed by comparison with the National Institute of Standards and Technology (NIST) mass spectral library.



Phenol Mixed Standards

Product No.	Description	Concentration	US EPA Methods	Packed in Ampoule
REPHE001 (11 Compound Mix)	2-Chlorophenol	Each analyte at 2,000µg/ml in	604	1ml
	2,4-Dichlorophenol	high-purity Dichloromethane		
	2,4-Dimethylphenol	(Methylene Chloride)		
	2-Methyl-4,6-dinitrophenol (DNOC)			
	2-Nitrophenol			
	4-Nitrophenol			
	Pentachlorophenol			
	Phenol			
	2,4,6-Trichlorophenol			
	4-Chloro-3-methylphenol			
	2,4-Dinitrophenol			
REPHE002 (7 Compound Mix)	2,6-Dichlorophenol	Each analyte at 2,000µg/ml in	604	1ml
	2-Methylphenol	high-purity Dichloromethane		
	3-Methylphenol	(Methylene Chloride)		
	4-Methylphenol			
	2,4,5-Trichlorophenol			
	2,3,4,6-Tetrachlorophenol			
	2-sec-Butyl-4,6-dinitrophenol (Dinoseb)			
REPHE003 (11 Compound Mix)	2-Chlorophenol	Each analyte at 2,000µg/ml in	604	1ml
	2,4-Dichlorophenol	high-purity Methanol		
	2,4-Dimethylphenol			
	2-Methyl-4,6-dinitrophenol (DNOC)			
	2-Nitrophenol			
	4-Nitrophenol			
	Pentachlorophenol			
	Phenol			
	2,4,6-Trichlorophenol			
	4-Chloro-3-methylphenol			
	2,4-Dinitrophenol			
REPHE004 (5 Compound Mix)	4-Chloro-3-methylphenol	Each analyte at 2,000µg/ml in	604	1ml
	2-Chlorophenol	high-purity Methanol		
	4-Nitrophenol			
	Pentachlorophenol			
	Phenol			
REPHE005 (18 Compound Mix)	2-Chlorophenol	Each analyte at 2,000µg/ml in	8270	1ml
	2,4-Dichlorophenol	high-purity Isopropanol		
	2,4-Dimethylphenol			
	2-Methyl-4,6-dinitrophenol (DNOC)			
	2-Nitrophenol			
	4-Nitrophenol			
	Pentachlorophenol			
	Phenol			
	2,4,6-Trichlorophenol			
	4-Chloro-3-methylphenol			
	2,4-Dinitrophenol			
	2,6-Dichlorophenol			
	2-Methylphenol			
	3-Methylphenol			
	4-Methylphenol			
	2,4,5-Trichlorophenol			
	2,3,4,6-Tetrachlorophenol			
	2-sec-Butyl-4,6-dinitrophenol (Dinoseb)			

Phenol Mixed Standards

Product No.	Description	Concentration	US EPA Methods	Packed in Ampoule
REPHE006 (13 Compound Mix)	4-Chloro-3-methylphenol	Each analyte at 2,000µg/ml in	8270	1ml
	2-Chlorophenol	high-purity Methanol		
	2,4-Dichlorophenol			
	2,6-Dichlorophenol			
	2,4-Dimethylphenol			
	2,4-Dinitrophenol			
	2-Methyl-4,6-dinitrophenol (DNOC)			
	2-Nitrophenol			
	4-Nitrophenol			
	Pentachlorophenol			
	Phenol			
	2,3,4,6-Tetrachlorophenol			
	2,4,6-Trichlorophenol			
REPHE007 (11 Compound Mix)	4-Chloro-3-methylphenol	Each analyte at 2,000µg/ml in	8270	1ml
	2-Chlorophenol	high-purity Methanol		
	2,4-Dichlorophenol			
	2,4-Dimethylphenol			
	2-Methyl-4,6-dinitrophenol (DNOC)			
	2,4-Dinitrophenol			
	2-Nitrophenol			
	4-Nitrophenol			
	Pentachlorophenol			
	Phenol			
	2,4,6-Trichlorophenol			
REPHE008 (5 Compound Mix)	4-Chloro-3-methylphenol	Each analyte at 2,000µg/ml in	8270	1ml
	2-Chlorophenol	high-purity Dichloromethane		
	4-Nitrophenol	(Methylene Chloride)		
	Pentachlorophenol			
	Phenol			
REPHE009 (6 Compound Mix)	4-Chloro-3-methylphenol	Each analyte at 2,000µg/ml in	8270	1ml
	2,4-Dinitrophenol	high-purity Dichloromethane		
	2-Nitrophenol	(Methylene Chloride)		
	Pentachlorophenol			
	Phenol			
	2,4,6-Trichlorophenol			
REPHE010 (6 Compound Mix)	2-Methylphenol	Each analyte at 2,000µg/ml in	1311	1ml
	3-Methylphenol	high-purity Dichloromethane		
	4-Methylphenol	(Methylene Chloride)		
	Pentachlorophenol			
	2,4,6-Trichlorophenol			
	2,4,5-Trichlorophenol			

Product No. Packed in 1ml Ampoule	Description - Each at 100µg/ml in Purge & Trap Methanol
REPHE015 (17 compound mix)	2,3,4,6-Tetrachlorophenol
	2,4,5-Trichlorophenol
	2,4,6-Trichlorophenol
	2,4-Dichlorophenol
	2,4-Dimethylphenol
	2,4-Dinitrophenol
	2,6-Dichlorophenol
	2-Chlorophenol
	2-Methyl-4,6-dinitrophenol (DNOC)
	2-Methylphenol
	2-Nitrophenol
	3-Methylphenol
	4-Chloro-3-methylphenol
	4-Methylphenol
	4-Nitrophenol
	Pentachlorophenol
Phenol	

Product No. Packed in 1ml Ampoule	Description - Each at 5000µg/ml in Methylene Chloride
REPHE016 (14 compound mix)	2,4,5-Trichlorophenol
	2,4,6-Trichlorophenol
	2,4-Dichlorophenol
	2,4-Dimethylphenol
	2,4-Dinitrophenol
	2-Chlorophenol
	2-Methyl-4,6-dinitrophenol (DNOC)
	2-Methylphenol
	2-Nitrophenol
	4-Chloro-3-methylphenol
	4-Methylphenol
	4-Nitrophenol
	Pentachlorophenol
	Phenol

Product No. Packed in 1ml Ampoule	Description - Each at 2000µg/ml in Methylene Chloride
REPHE017 (14 compound mix)	2,4,5-Trichlorophenol
	2,4,6-Trichlorophenol
	2,4-Dichlorophenol
	2,4-Dimethylphenol
	2,4-Dinitrophenol
	2-Chlorophenol
	2-Methyl-4,6-dinitrophenol (DNOC)
	2-Methylphenol
	2-Nitrophenol
	4-Chloro-3-methylphenol
	4-Methylphenol
	4-Nitrophenol
	Pentachlorophenol
	Phenol

Product No. Packed in 1ml Ampoule	Description - Each at 1000µg/ml in Methylene Chloride
REPHE018 (14 compound mix)	2,4,6-Trichlorophenol
	2,4-Dichlorophenol
	2,4-Dimethylphenol
	2,4-Dinitrophenol
	2,6-Dichlorophenol
	2-Chlorophenol
	2-Methyl-4,6-dinitrophenol (DNOC)
	2-Methylphenol
	2-Nitrophenol
	4-Chloro-3-methylphenol
	4-Methylphenol
	4-Nitrophenol
	Pentachlorophenol
	Phenol

Product No. Packed in 1ml Ampoule	Description - Each at 1000µg/ml in Purge & Trap Methanol
REPHE020 (12 compound mix)	2,4,6-Trichlorophenol
	2,4-Dichlorophenol
	2,4-Dimethylphenol
	2,4-Dinitrophenol
	2-Chlorophenol
	2-Methyl-4,6-dinitrophenol (DNOC)
	2-Nitrophenol
	3-Methylphenol
	4-Chloro-3-methylphenol
	4-Nitrophenol
	Pentachlorophenol
	Phenol

Product No. Packed in 1ml Ampoule	Description - Each at 2000µg/ml in Methylene Chloride
REPHE023 (12 compound mix)	2,4,6-Trichlorophenol
	2,4-Dichlorophenol
	2,4-Dimethylphenol
	2,4-Dinitrophenol
	2-Chlorophenol
	2-Methyl-4,6-dinitrophenol (DNOC)
	2-Methylphenol
	2-Nitrophenol
	4-Chloro-3-methylphenol
	4-Nitrophenol
	Pentachlorophenol
	Phenol

Product No. Packed in 1ml Ampoule	Description - Each at 2000µg/ml in Isopropanol
REPHE024 (11 compound mix)	2,4,6-Trichlorophenol
	2,4-Dichlorophenol
	2,4-Dimethylphenol
	2,4-Dinitrophenol
	2-Chlorophenol
	2-Methyl-4,6-dinitrophenol (DNOC)
	2-Nitrophenol
	4-Chloro-3-methylphenol
	4-Nitrophenol
	Pentachlorophenol
	Phenol

Product No. Packed in 1ml Ampoule	Description - Each at 500µg/ml in Purge & Trap Methanol
REPHE026 (11 compound mix)	2,4,6-Trichlorophenol
	2,4-Dichlorophenol
	2,4-Dimethylphenol
	2,4-Dinitrophenol
	2-Chlorophenol
	2-Methyl-4,6-dinitrophenol (DNOC)
	2-Nitrophenol
	4-Chloro-3-methylphenol
	4-Nitrophenol
	Pentachlorophenol
	Phenol

Product No. Packed in 1ml Ampoule	Description - Each at 20µg/ml in Purge & Trap Methanol
REPHE028 (11 compound mix)	2,4,6-Trichlorophenol
	2,4-Dichlorophenol
	2,4-Dimethylphenol
	2,4-Dinitrophenol
	2-Chlorophenol
	2-Methyl-4,6-dinitrophenol (DNOC)
	2-Nitrophenol
	4-Chloro-3-methylphenol
	4-Nitrophenol
	Pentachlorophenol
	Phenol

Product No. Packed in 1ml Ampoule	Description - Each at 1,000µg/ml in Purge & Trap Methanol
REPHE029 (11 compound mix)	2,4,6-Trichlorophenol
	2,4-Dichlorophenol
	2,4-Dimethylphenol
	2,4-Dinitrophenol
	2-Chlorophenol
	2-Methyl-4,6-dinitrophenol (DNOC)
	2-Nitrophenol
	4-Chloro-3-methylphenol
	4-Nitrophenol
	Pentachlorophenol
	Phenol

Product No. Packed in 1ml Ampoule	Description - Each at 500µg/ml in Purge & Trap Methanol
REPHE030 (11 compound mix)	2,4-Dichlorophenol
	2,4-Dimethylphenol
	2,4-Dinitrophenol
	2-Chlorophenol
	2-Methyl-4,6-dinitrophenol (DNOC)
	2-Nitrophenol
	2-sec-Butyl-4,6-dinitrophenol (Dinoseb)
	4-Chloro-3-methylphenol
	4-Nitrophenol
	Pentachlorophenol
	Phenol

Product No. Packed in 1ml Ampoule	Description - Each at 2000µg/ml in Methylene Chloride
REPHE030 (11 compound mix)	2,4,6-Trichlorophenol
	2,4-Dichlorophenol
	2,4-Dimethylphenol
	2,4-Dinitrophenol
	2-Chlorophenol
	2-Nitrophenol
	2-sec-Butyl-4,6-dinitrophenol (Dinoseb)
	4-Chloro-3-methylphenol
	4-Nitrophenol
	Pentachlorophenol
	Phenol

Product No. Packed in 1ml Ampoule	Description - Each at 1000µg/ml in Methylene Chloride
REPHE034 (11 compound mix)	2,4,6-Trichlorophenol
	2,4-Dichlorophenol
	2,4-Dimethylphenol
	2,4-Dinitrophenol
	2-Chlorophenol
	2-Methyl-4,6-dinitrophenol (DNOC)
	2-Nitrophenol
	4-Chloro-3-methylphenol
	4-Nitrophenol
	Pentachlorophenol
	Phenol

Product No. Packed in 1ml Ampoule	Description - Each at 2000µg/ml in Methylene Chloride
REPHE037 (9 compound mix)	2,4,6-Trichlorophenol
	2,4-Dichlorophenol
	2,4-Dimethylphenol
	2-Chlorophenol
	2-Methylphenol
	2-Nitrophenol
	4-Chloro-3-methylphenol
	4-Methylphenol
	Phenol

Product No. Packed in 1ml Ampoule	Description - Each at 2000µg/ml in Purge & Trap Methanol
REPHE038 (8 compound mix)	2,4,6-Trichlorophenol
	2,4-Dichlorophenol
	2-Chlorophenol
	2-Methylphenol
	3-Methylphenol
	4-Methylphenol
	Pentachlorophenol
	Phenol

Product No. Packed in 1ml Ampoule	Description - Each at 100µg/ml in Purge & Trap Methanol
REPHE039 (8 compound mix)	2,4,6-Trichlorophenol
	2,4-Dichlorophenol
	2-Chlorophenol
	2-Methyl-4,6-dinitrophenol (DNOC)
	3-Methylphenol
	4-Methylphenol
	Pentachlorophenol
	Phenol

Product No. Packed in 1ml Ampoule	Description - Each at 2000µg/ml in Isopropanol
REPHE040 (7 compound mix)	2,3,4,6-Tetrachlorophenol
	2,4,5-Trichlorophenol
	2,6-Dichlorophenol
	2-Methylphenol
	2-sec-Butyl-4,6-dinitrophenol (Dinoseb)
	3-Methylphenol
	4-Methylphenol

Product No. Packed in 1ml Ampoule	Description - Each at 2000µg/ml in Methylene Chloride
REPHE041 (6 compound mix)	2,4,6-Trichlorophenol
	2,4-Dichlorophenol
	2-Nitrophenol
	4-Chloro-3-methylphenol
	Pentachlorophenol
	Phenol

Product No. Packed in 1ml Ampoule	Description - Each at 2000µg/ml in Purge & Trap Methanol
REPHE042 (5 compound mix)	2-Chlorophenol
	4-Chloro-3-methylphenol
	4-Nitrophenol
	Pentachlorophenol
	Phenol

Product No. Packed in 1ml Ampoule	Description - Each at 2000µg/ml in Methylene Chloride
REPHE045 (5 compound mix)	2,4-Dimethylphenol
	2-Methyl-4,6-dinitrophenol (DNOC)
	2-Nitrophenol
	4-Nitrophenol
	Phenol

Product No. Packed in 1ml Ampoule	Description - Each at 2000µg/ml Methylene Chloride
REPHE046 (5 compound mix)	2,4,5-Trichlorophenol
	2-Methylphenol
	2-sec-Butyl-4,6-dinitrophenol (Dinoseb)
	3-Methylphenol
	4-Methylphenol

Product No. Packed in 1ml Ampoule	Description - Each at 100µg/ml in Purge & Trap Methanol
REPHE047 (4 compound mix)	2,3,4,6-Tetrachlorophenol
	2,4,6-Trichlorophenol
	2,4-Dichlorophenol
	Pentachlorophenol

Product No. Packed in 1ml Ampoule	Description - Each at 4000µg/ml in Methylene Chloride
REPHE048 (4 compound mix)	2,4-Dinitrophenol
	2-Methyl-4,6-dinitrophenol (DNOC)
	4-Nitrophenol
	Pentachlorophenol

Product No. Packed in 1ml Ampoule	Description - Each at 2000µg/ml in Ethanol
REPHE050 (3 compound mix)	2,3,4,6-Tetrachlorophenol
	2,4,6-Trichlorophenol
	Pentachlorophenol

Product No. Packed in 1ml Ampoule	Description - Each in Purge & Trap Methanol	Concentration µg/ml
REPHE022 (12 compound mix)	2,4,6-Trichlorophenol	100
	2,4-Dichlorophenol	100
	2,4-Dimethylphenol	100
	2,4-Dinitrophenol	500
	2-Chlorophenol	100
	2-Methyl-4,6-dinitrophenol (DNOC)	500
	2-Methylphenol	100
	2-Nitrophenol	100
	4-Chloro-3-methylphenol	100
	4-Nitrophenol	500
	Pentachlorophenol	500
	Phenol	100
REPHE025 (11 compound mix)	2,4,6-Trichlorophenol	500
	2,4-Dichlorophenol	500
	2,4-Dimethylphenol	500
	2,4-Dinitrophenol	1500
	2-Chlorophenol	500
	2-Methyl-4,6-dinitrophenol (DNOC)	2500
	2-Nitrophenol	500
	4-Chloro-3-methylphenol	2500
	4-Nitrophenol	2500
	Pentachlorophenol	2500
	Phenol	600
REPHE027 (11 compound mix)	2,4,6-Trichlorophenol	1500
	2,4-Dichlorophenol	500
	2,4-Dimethylphenol	500
	2,4-Dinitrophenol	1500
	2-Chlorophenol	500
	2-Methyl-4,6-dinitrophenol (DNOC)	2500
	2-Nitrophenol	500
	4-Chloro-3-methylphenol	2500
	4-Nitrophenol	2500
	Pentachlorophenol	2500
	Phenol	500
REPHE044 (5 compound mix)	2,4,6-Trichlorophenol	40
	2,4-Dichlorophenol	40
	3-Methylphenol	40
	4-Nitrophenol	10
	Pentachlorophenol	40

Product No. Packed in 1ml Ampoule	Description - Each in Methylene Chloride	Concentration µg/ml	US EPA Methods
REPHE019 (13 compound mix)	2,4,6-Trichlorophenol	1000	526
	2,4-Dichlorophenol	1000	528
	2,4-Dimethylphenol	1000	
	2,4-Dinitrophenol	5000	
	2,6-Dichlorophenol	1000	
	2-Chlorophenol	1000	
	2-Methyl-4,6-dinitrophenol (DNOC)	1000	
	2-Methylphenol	1000	
	2-Nitrophenol	1000	
	4-Chloro-3-methylphenol	1000	
	4-Nitrophenol	1000	
	Pentachlorophenol	1000	
	Phenol	1000	

Product No. Packed in 1ml Ampoule	Description - Each in Purge & Trap Methanol	Concentration µg/ml	US EPA Methods
REPHE021 (12 compound mix)	2,4-Dichlorophenol	1000	525
	2,4-Dimethylphenol	1000	
	2,4-Dinitrophenol	5000	
	2,6-Dichlorophenol	1000	
	2-Chlorophenol	1000	
	2-Methyl-4,6-dinitrophenol (DNOC)	5000	
	2-Methylphenol	1000	
	2-Nitrophenol	1000	
	4-Chloro-3-methylphenol	1000	
	4-Nitrophenol	1000	
	Pentachlorophenol	1000	
	Phenol	1000	

Product No. Packed in 1ml Ampoule	Description - Each in Methylene Chloride	Concentration µg/ml	US EPA Methods
REPHE032 (11 compound mix)	2,4,6-Trichlorophenol	1500	604
	2,4-Dichlorophenol	500	625
	2,4-Dimethylphenol	500	
	2,4-Dinitrophenol	1500	
	2-Chlorophenol	500	
	2-Nitrophenol	500	
	2-sec-Butyl-4,6-dinitrophenol (Dinoseb)	2500	
	4-Chloro-3-methylphenol	2000	
	4-Nitrophenol	2500	
	Pentachlorophenol	2500	
	Phenol	500	

Product No. Packed in 1ml Ampoule	Description - Each at 2000µg/ml in Methylene Chloride	US EPA Methods
REPHE033 (11 compound mix)	2,4-Dichlorophenol	8270B
	2,4-Dimethylphenol	
	2,4-Dinitrophenol	
	2-Chlorophenol	
	2-Methyl-4,6-dinitrophenol (DNOC)	
	2-Nitrophenol	
	2-sec-Butyl-4,6-dinitrophenol (Dinoseb)	
	4-Chloro-3-methylphenol	
	4-Nitrophenol	
	Pentachlorophenol	
	Phenol	

Product No. Packed in 1ml Ampoule	Description - Each at 100µg/ml in Purge & Trap Methanol	US EPA Methods
REPHE035 (10 compound mix)	2,4,6-Trichlorophenol	625
	2,4-Dichlorophenol	
	2,4-Dimethylphenol	
	2,4-Dinitrophenol	
	2,6-Dichlorophenol	
	2-Chlorophenol	
	4-Chloro-3-methylphenol	
	4-Nitrophenol	
	Pentachlorophenol	
	Phenol	

Product No. Packed in 1ml Ampoule	Description - Each at 2000µg/ml in Isopropanol	US EPA Methods
REPHE036 (9 compound mix)	2,3,4,6-Tetrachlorophenol	8040
	2,4,5-Trichlorophenol	
	2,4-Dimethylphenol	
	2,4-Dinitrophenol	
	2,6-Dichlorophenol	
	2-Chlorophenol	
	2-sec-Butyl-4,6-dinitrophenol (Dinoseb)	
	3-Methylphenol	
	4-Methylphenol	

Product No. Packed in 1ml Ampoule	Description - Each at 1000µg/ml in Methylene Chloride	US EPA Methods
REPHE049 (4 compound mix)	2,4,6-Trichlorophenol	525
	2,6-Dichlorophenol	
	2-Methyl-4,6-dinitrophenol (DNOC)	
	Phenol	

Phenols Single Compound Standards

Product No.	Description	Concentration	US EPA Methods	Packed in Ampoule
REPHE101	2-Chlorophenol	2000µg/ml in high-purity Methanol	604, 627, 8270, 1311	1ml
REPHE102	2,4-Dichlorophenol	2000µg/ml in high-purity Methanol	604, 627, 8270, 1311	1ml
REPHE103	2,4-Dimethylphenol	2000µg/ml in high-purity Methanol	604, 627, 8270, 1311	1ml
REPHE104	4-Chloro-3-methylphenol	2000µg/ml in high-purity Methanol	604, 627, 8270, 1311	1ml
REPHE105	2-Methyl-4,6-dinitrophenol(DNOC)	2000µg/ml in high-purity Methanol	604, 627, 8270, 1311	1ml
REPHE106	2,4-Dinitrophenol	2000µg/ml in high-purity Methanol	604, 627, 8270, 1311	1ml
REPHE107	2-Nitrophenol	2000µg/ml in high-purity Methanol	604, 627, 8270, 1311	1ml
REPHE108	4-Nitrophenol	2000µg/ml in high-purity Methanol	604, 627, 8270, 1311	1ml
REPHE109	Pentachlorophenol	2000µg/ml in high-purity Methanol	604, 627, 8270, 1311	1ml
REPHE110	Phenol	2000µg/ml in high-purity Methanol	604, 627, 8270, 1311	1ml
REPHE119	Phenol	100µg/ml in Methylene Chloride	604, 627, 8270, 1311	1ml
REPHE111	2,4,6-Trichlorophenol	2000µg/ml in high-purity Methanol	604, 627, 8270, 1311	1ml
REPHE112	2,4,5-Trichlorophenol	2000µg/ml in high-purity Methanol	604, 627, 8270, 1311	1ml
REPHE113	2,3,4,6-Tetrachlorophenol	2000µg/ml in high-purity Methanol	604, 627, 8270, 1311	1ml
REPHE114	2,6-Dichlorophenol	2000µg/ml in high-purity Methanol	604, 627, 8270, 1311	1ml
REPHE115	2-Methylphenol	2000µg/ml in high-purity Methanol	604, 627, 8270, 1311	1ml
REPHE116	3-Methylphenol	2000µg/ml in high-purity Methanol	604, 627, 8270, 1311	1ml
REPHE117	4-Methylphenol	2000µg/ml in high-purity Methanol	604, 627, 8270, 1311	1ml
REPHE118	Dinoseb	2000µg/ml in high-purity Methanol	604, 627, 8270, 1311	1ml

Phenol Surrogate Standards

Product No.	Description	Concentration	US EPA Methods	Packed in Ampoule
REPHE001-S	2-Fluorobiphenyl	1000µg/ml	625	1ml
	Nitrobenzene D5	1000µg/ml		
	p-Terphenyl-D14	1000µg/ml		
	Methyl Orange	2500µg/ml		
	In 1:1 Dichloromethane:Acetone			
REPHE005-S	2-Fluorobiphenyl	5000µg/ml	625	1ml
	Nitrobenzene D5	5000µg/ml		
	p-Terphenyl-D14	5000µg/ml		
	Methyl Orange	12500µg/ml		
	In 1:1 Dichloromethane:Acetone			



P.O. Box 16 (Palokorvenkatu 2)
 FI-04261 Kerava, Finland
 Tel. +358 10 417 4500
 hyxo@hyxo.fi • www.hyxo.com