

# Roots™ EasyAir X2

Factory blower package system



# Howden Roots EasyAir X2.

**Reduce noise and  
maintenance costs  
while delivering  
reliable performance.**



Howden is a truly global company, with an established presence in more than 27 countries across every continent. Our network of local support services enables us to respond urgently to customer queries and maintenance requirements, and we understand the importance of local circumstances, from environmental legislation to energy costs.



Every product we deliver is backed by an unequivocal lifetime commitment to spare parts and product support. Replacement parts are made using the original production drawings, so that compatibility and quality are guaranteed. We also offer a full upgrade and enhancement program that allows customers to take advantage of new developments, or adapt existing equipment to changed conditions.

# Overview

## Basic Blower Package Description

The Roots EasyAir X2 system provides the best of performance engineering in a standard package. It can be configured to meet unique requirements and is suitable for pressure or vacuum applications.

The Roots EasyAir X2 system is a cost-effective factory designed blower package available for your:

- Wastewater & water treatment needs
- Pneumatic conveying & bulk handling needs
- Process air needs

## Package Standard Equipment

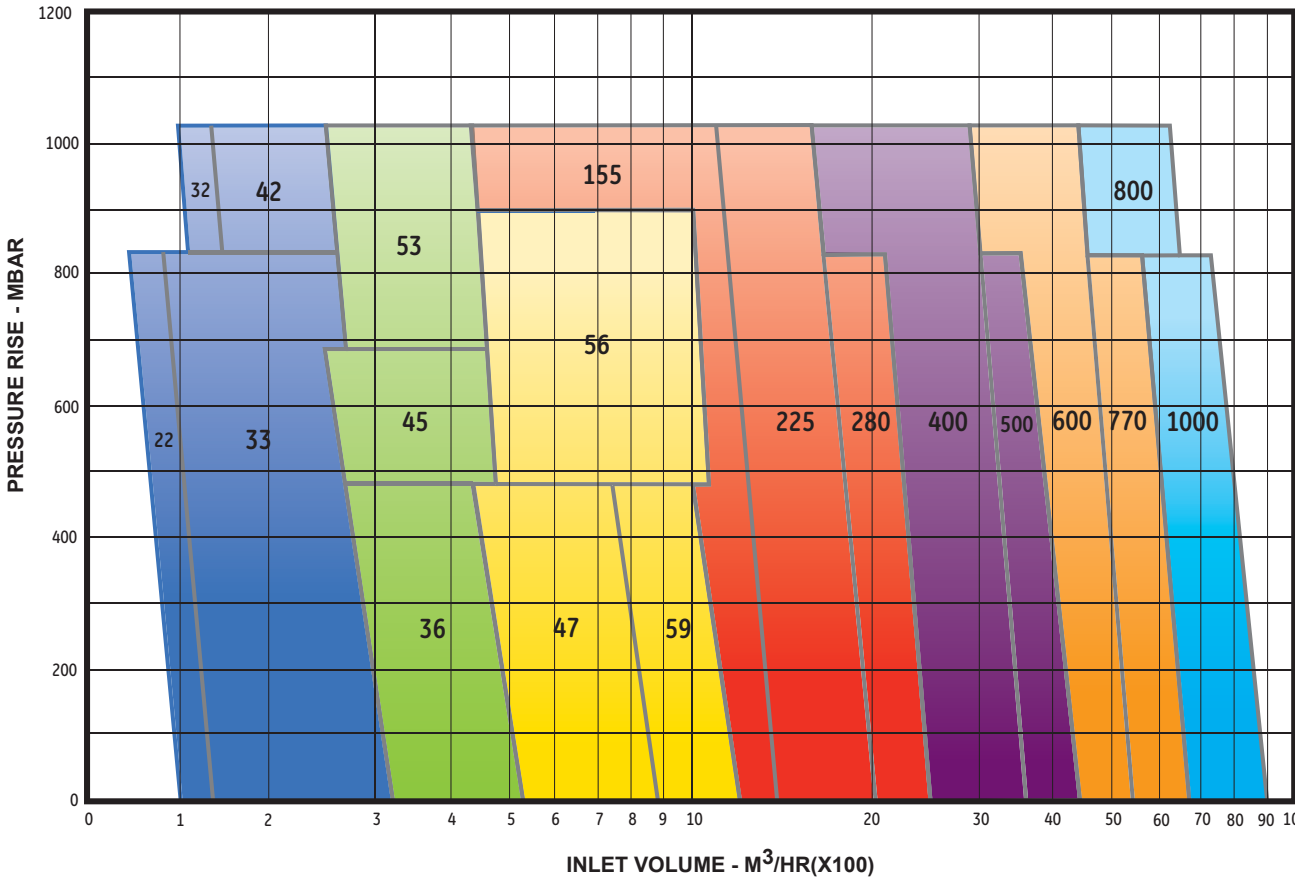
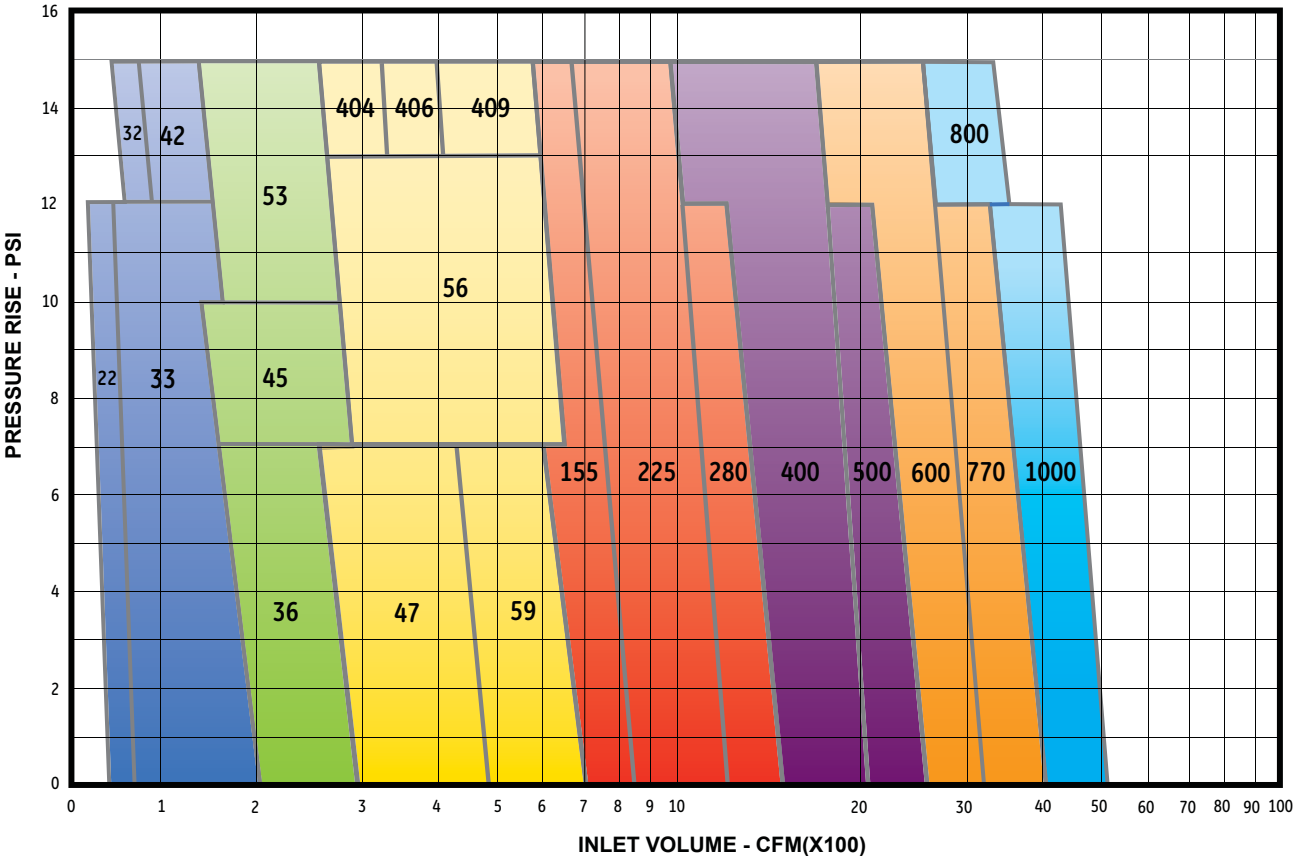
- Bi- or tri-lobe splash lubricated blower
- Drive motor is high efficiency, TEFC enclosure with 1.15 service factor
  - Or provide us with your specified motor requirements and let Howden provide the solution
- Self-tensioning V-belt drive
- Inlet filter/silencer with polyester element
- Discharge silencer (non-packed; multi-chamber)
- Non-electric enclosure vent fan
- Vibration isolation pads
- Panel-mounted filter restriction gauge, system pressure/vacuum gauge, discharge temperature gauge
- Acoustic enclosure with robust painting system
- Discharge flexible connector
- Check valve
- Pressure relief valve
- Oil drain manifold with sight gauge

## Package Design Features

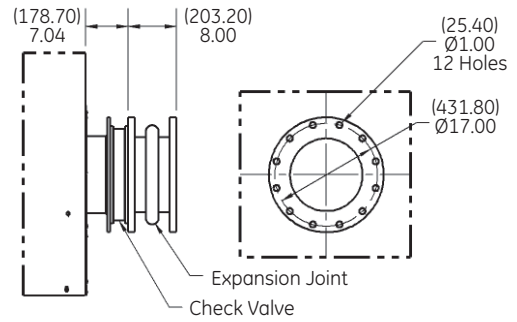
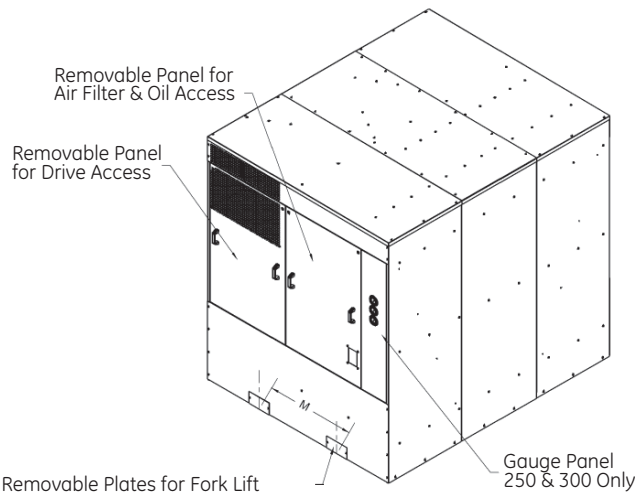
- Easy to install, with small footprint
- Electrical access through the floor or rear panel gives you added flexibility
- Automatic belt-tensioning system is counter-balanced, optimizing the life of the V-belts
- No special jacks are required to lift the motor when replacing belts (saving time and effort)
- Side-by-side installation allows for more efficient use of your available space
- Keyed locking panels allow easy filter maintenance and safe access to equipment
- Air flow from front to rear is designed for personnel safety and equipment reliability
- Access to air filter is convenient and designed to reduce pressure losses, improving reliability and blower efficiency and protecting your investment
- Blower shaft-mounted fan provides exceptional cooling, reducing enclosure temperature dramatically and extending the life of critical components
- Gauges are provided to monitor blower health as standard equipment and positioned ergonomically for your personnel's safety
- Acoustic enclosure is designed to provide up to 22 dBA free field attenuation, helping you to meet the specified noise requirements of the jobsite
- Broad operating performance range provides you with a multitude of efficient and compact solutions so your requirements are satisfied



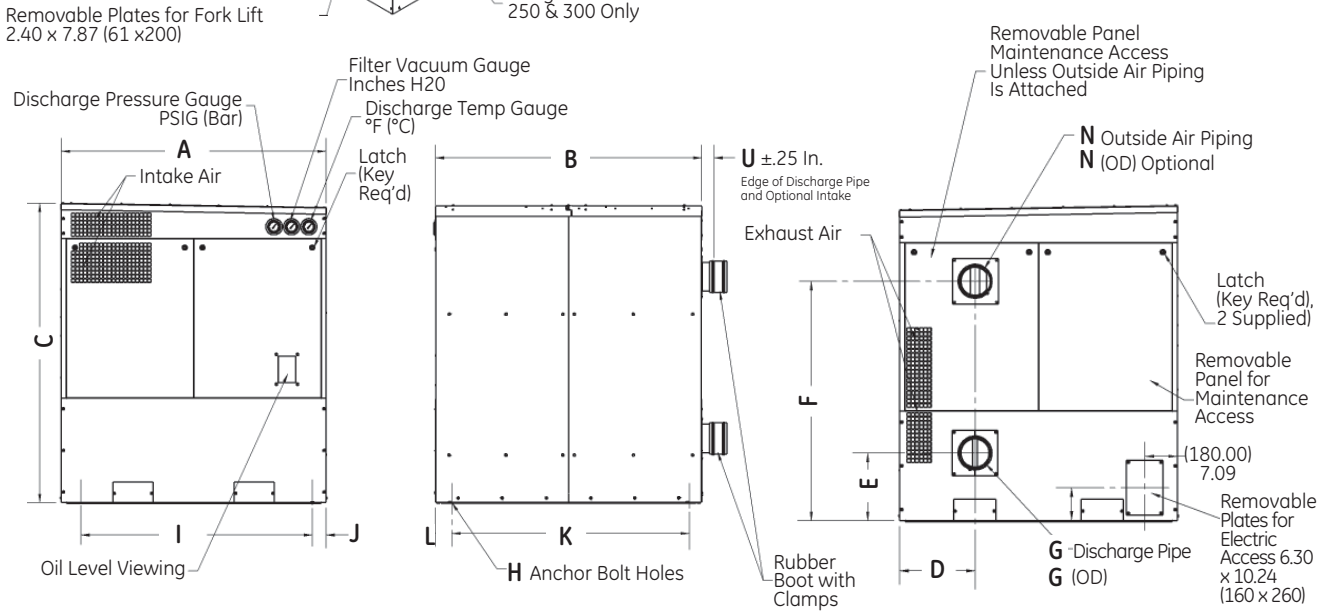
# EasyAir X2 Package Sizes and Blower Performance Range



EAX2 50   EAX2 65   EAX2 100   EAX2 150   EAX2 200   EAX2 250   EAX2 300



View of EasyAir X2 300 Flanged Discharge Connection



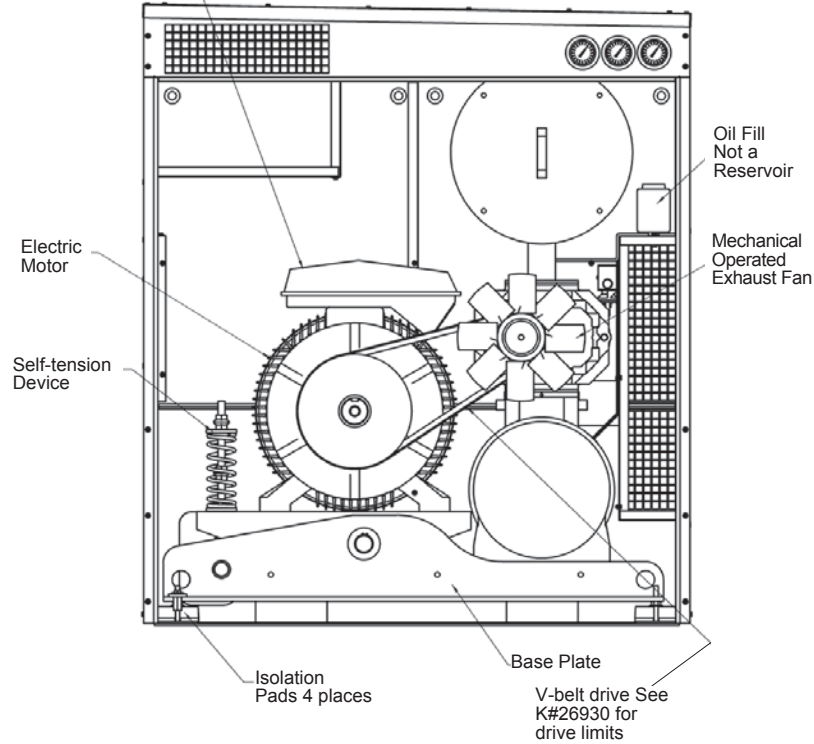
## Dimension Table

Model	A	B	C	D	E	F	G	G (OD)	H	Blower size	Approx weight excluding motor
EAX2 50	43.31 (1100)	39.36 (1000)	46.25 (1175)	10.88 (276.5)	7.66 (194.5)	33.53 (851.7)	2.00 (50)	2.38 (60.3)	0.78 (20)	URAI 22, 32, 33, 42	450-525 lbs
EAX2 65	43.31 (1100)	39.36 (1000)	46.25 (1175)	10.88 (276.5)	7.66 (194.5)	33.53 (851.7)	2.50 (65)	2.88 (73)	0.78 (20)	URAI 36, 45, 53	600-650 lbs
EAX2 100	49.21 (1250)	47.24 (1200)	59.05 (1500)	10.45 (265.5)	9.23 (234.5)	46.54 (1182)	4.00 (100)	4.50 (114)	0.78 (20)	URAI 47, 56, 59 RAM 404, 406, 409	900-1125 lbs
EAX2 150	60.03 (1250)	61.02 (1550)	67.91 (1725)	16.30 (414)	14.60 (371)	51.65 (1312)	6.00 (150)	6.60 (168)	0.78 (20)	RAM X 155, 225, 280	1650-1775 lbs
EAX2 200	66.93 (1700)	70.87 (1800)	80.70 (2050)	19.72 (500.9)	17.96 (456.3)	59.80 (1519)	8.00 (200)	8.63 (219)	0.78 (20)	RAM X 400, 500	2425-2550 lbs
EAX2 250	76.77 (1950)	90.55 (2300)	91.53 (2325)	24.25 (641.5)	16.98 (431.4)	69.50 (1765.2)	10.00 (250)	10.75 (273)	0.78 (20)	RAM X 600, 770	3650-3900 lbs
EAX2 300	83.66 (2125)	102.36 (2600)	97.44 (2475)	27.85 (707.5)	19.93 (506.4)	77.17 (1960.1)	12.00 (300)	12" 150 #FLG	0.78 (20)	RAM x 800, 1000	4950-5450 lbs

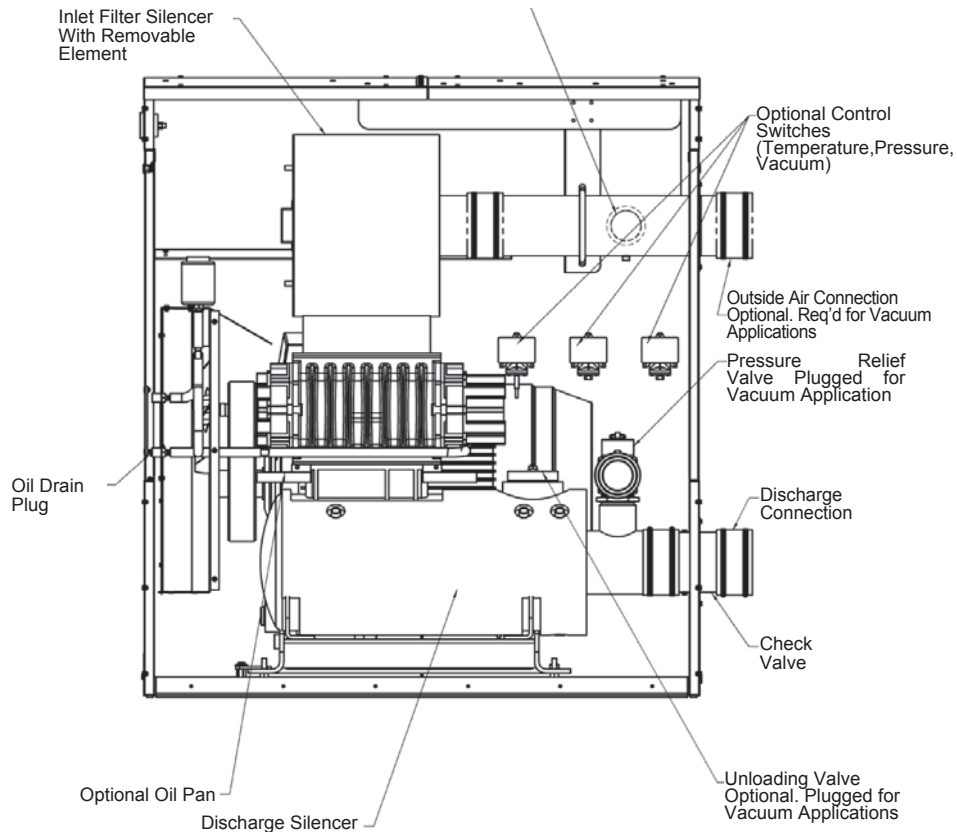
Model	I	J	K	L	M	N	N (OD)	U	Blower size	Approx weight excluding motor
EAX2 50	37.03 (940.5)	3.14 (79.95)	32.83 (834)	3.27 (83)	23.62 (600)	3.00 (76.2)	3.50 (88.9)	3.00 (75)	URAI 22, 32, 33, 42	450-525 LBS
EAX2 65	37.03 (940.5)	3.14 (79.95)	32.83 (834)	3.27 (83)	23.62 (600)	3.00 (76.2)	3.50 (88.9)	3.00 (75)	URAI 36, 45, 53	600-650 LBS
EAX2 100	42.93 (1090.5)	3.14 (79.95)	40.71 (1034)	3.27 (83)	23.62 (600)	4.00 (100)	4.5 (114)	3.00 (75)	URAI 47, 56, 59 RAM 404, 406, 409	900-1125 LBS
EAX2 150	53.76 (1365.5)	3.14 (79.95)	54.48 (1384)	3.27 (83)	27.55 (700)	6.00 (150)	6.60 (168)	3.00 (75)	RAM X 155, 225, 280	1650-1775 LBS
EAX2 200	60.65 (1540.5)	3.14 (79.95)	64.33 (1634)	3.27 (83)	33.46 (850)	8.00 (200)	8.63 (219)	6.30 (160)	RAM X 400, 500	2425-2550 LBS
EAX2 250	68.77 (1747)	3.99 (101.5)	84.17 (2138)	3.19 (81)	35.83 (910)	12.00 (300)	12.75 (323.9)	9.72 (247)	RAM X 600, 770	3650-3900 LBS
EAX2 300	75.67 (1922)	3.99 (101.5)	95.98 (2438)	3.19 (81)	35.83 (910)	12.00 (300)	12.75 (323.9)	See FLG view	RAM X 800, 1000	4950-5450 LBS

All dimensions in inches. Dimensions shown ( ) are millimeters

This conduit box may be located on the left side if a NEMA motor is supplied. (IEC motor shown)



Vacuum Relief Valve Connection for Vacuum Applications. Not Available on Pressure Applications.





# Servicing and maintenance

Howden owns and operates strategically located blower maintenance and repair facilities in the following areas: Connersville, Indiana, Houston, Texas, Skelmersdale, United Kingdom, Shanghai, China.

Howden has additional authorized service capability via an extensive network of distributors and agents.

Each facility is well equipped and staffed with factory trained service personnel to meet your unique needs. These facilities regularly service competitor units and keep critical parts on hand for expedited delivery. Howden warrants all authorized maintenance and repair work with one year coverage on all parts and workman-ship. Certified ISO-9001.

## Warranty

Applicable series or model	Designation or gear diameter	Warranty period- months from date of original unit start-up/ months from date of original shipment, whichever occurs first
<b>Bare shaft unit</b>		
URAI* & URAI-J* including DSL	2 ½ - 7 inch	24/30
RAM* & RAM-J*	4 ½ - 6 inch	24/30
RAM-X*	155, 225, 280, 400 & 500	24/30
RAM-X*	600, 770, 800 & 1000	12/18
<b>Standard factory package</b> (note that bare shaft blowers are covered separately above. Explicitly not included in standard factory package warranty are drive belts, filter elements, hoses and fittings, gauges and switches.)		
EasyAir* X2	50, 65, 100, 150 & 200	18/24
EasyAir* X2	250 & 300	12/18

## Aftermarket services

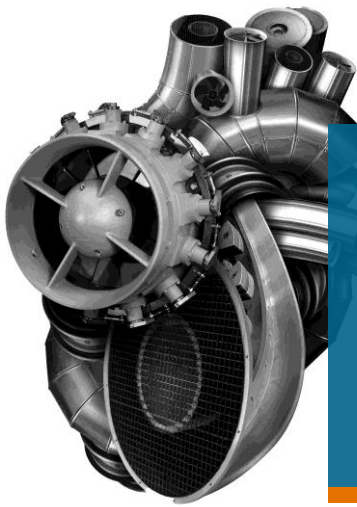
All Howden equipment comes with an absolute commitment to aftermarket support that includes spare parts, servicing and maintenance, advice and on-site training. We can also offer detailed upgrade and enhancement planning to bring the benefits and efficiencies of new technologies into existing installations with the least disruption. While we prefer to build long-term service partnerships based on scheduled maintenance designed to prevent problems arising, we are ready to respond to any request quickly. As a global organisation, we pride ourselves on our ability to deliver a rapid local service anywhere in the world.

## More information

For further information on any of our products or services please visit:

[www.howden.com/hro](http://www.howden.com/hro)





## At the heart of your operations

Howden people live to improve our products and services and for over 160 years our world has revolved around our customers. This dedication means our air and gas handling equipment adds maximum value to your operations. We have innovation in our hearts and every day we focus on providing you with the best solutions for your vital operations.



### Howden Roots

---

900 West Mount St.  
Connersville,  
Indiana 47331

**Revolving Around You™**