

Protegra CS® RO Pure Water System



MEETING ALL PURE WATER DEMANDS

Laboratory, medical and industrial applications all need pure water in various qualities and quantities. The Protegra CS® RO Series produces pure water for a wide variety of applications by reversing the natural osmosis process to deionize water in an environmentally friendly manner. Pure water produced via reverse osmosis can be put to a number of uses in laboratories – for rinsing laboratory glassware or as feed water to autoclaves, climatized cabinets and ultrapure water systems.

The Protegra CS RO Series focuses on economic efficiency, combining a compact design with high quality components and intelligent controls. The quality of the pure water produced depends on the quality of the inlet water entering the system.

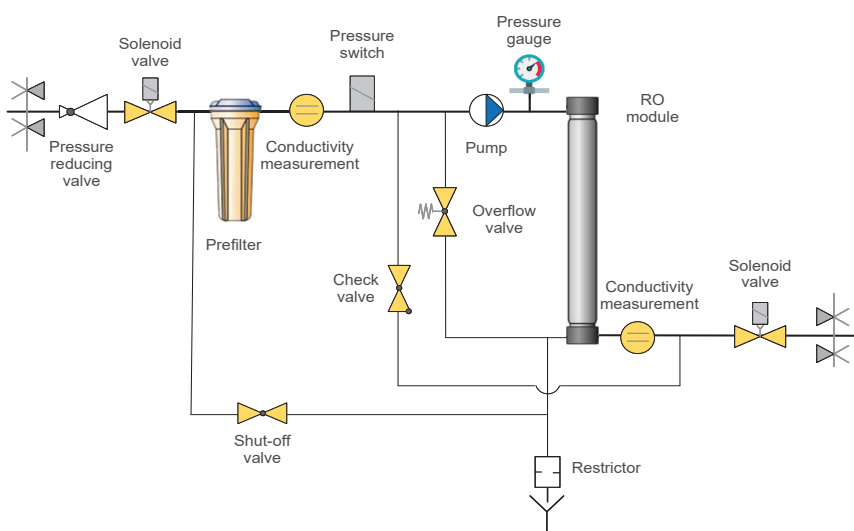
The Protegra CS RO Series is designed to produce large amounts of purified water with conductivity values depending on the salt content of the feed water (for example 1000 $\mu\text{S}/\text{cm}$ tap water quality: < 20 $\mu\text{S}/\text{cm}$ product water). The deionization rate is at least 98 %. Additional equipment, such as different tank sizes and pressure pumps, can be added to the plant according to customers' individual needs. The system can, for instance, be set up as a central water treatment plant with in a building and supplemented with accessories to form a closed circuit pipeline. All systems are equipped with an RS 232 interface.

BENEFITS

- Scope of supply includes consumables
- Compact service-friendly design, operable from all sides
- Service/maintenance report
- Made in Germany

TYPICAL APPLICATIONS

- Feed for laboratory ultrapure water systems
- General chemistry
- Laboratory washing machines
- Water for autoclaves and environmental chambers
- Buffer preparation



SPECIFICATIONS CABINET VERSION

		Protegra CS RO 200	Protegra CS RO 500	Protegra CS RO 750	Protegra CS RO 1000
Flow rate	l/h	200	500	750	1000
Rejection rate min.	%	98	98	98	98
Recovery rate max.	%	75	75	75	75
Germ count reduction	%	> 99	> 99	> 99	> 99
Operating pressure max.	bar	14	14	14	14
Number of RO modules		1	3	4	4
Power supply	V/Hz	230/50	3 x 400/50	3 x 400/50	3 x 400/50
Power consumption	kW/h	0.55	1.4	1.5	1.6
Dimensions (H x W x D)	mm	1650 x 600 x 550	1650 x 600 x 550	1650 x 600 x 550	1650 x 600 x 750
Weight	kg	120	140	172	180
Catalog number		W3T199617	W3T197521	W3T199222	W3T199821

Systems with higher flowrate on demand.

SPECIFICATIONS OPEN FRAME VERSION

		Protegra OF RO 200	Protegra OF RO 500	Protegra OF RO 750	Protegra OF RO 1000
Flow rate	l/h	200	500	750	1000
Rejection rate min.	%	98	98	98	98
Recovery rate max.	%	75	75	75	75
Germ count reduction	%	> 99	> 99	> 99	> 99
Operating pressure max.	bar	14	14	14	14
Number of RO modules		1	3	4	5
Power supply	V/Hz	230/50	3 x 400/50	3 x 400/50	3 x 400/50
Power consumption	kW/h	0.55	1.4	1.8	2.5
Dimensions (H x W x D)	mm	1640 x 605 x 600	1640 x 605 x 600	1640 x 605 x 600	1640 x 605 x 600
Weight	kg	95	140	170	190
Catalog number		W3T269403	W3T314581	W3T314582	W3T314583

Systems with higher flowrate on demand.

CONSUMABLES

Catalog number	Description
W2T526933	Activated carbon/Fine filter cartridge ACB
W2T526551	Fine filter cartridge 5 µm Big Blue

TESTKITS

Catalog number	Description
W2T870161	Testkit Carbon dioxide
W2T870160	Testkit Silica

ACCESSORIES

Catalog number	Description
W3T428768	Communication interface module (LAB)
W3T262426	Degassing unit from 120 l/h on up to max. 5000 l/h

TANKS

Catalog number	Description
W3T197508	300 l, 650 x 1080 mm
W3T198133	500 l, 770 x 1230 mm
W3T198836	750 l, 720 x 720 x 1700 mm
W3T198753	1000 l, 780 x 780 x 1940 mm
W3T199591	1650 l, 2085 x 720 x 1400 mm
W3T199890	2000 l, 2180 x 720 x 1700 mm
W3T199834	3000 l, 2230 x 850 x 2200 mm

Auf der Weide 10, 89312 Günzburg, Germany



+49 (8221) 904-0 sales.lab.de@evoqua.com www.evoqua.com/lab-water

Protegra CS is a trademark of Evoqua Water Technologies LLC, its subsidiaries or affiliates, in some countries.

All information presented herein is believed reliable and in accordance with accepted engineering practices. Evoqua makes no warranties as to the completeness of this information. Users are responsible for evaluating individual product suitability for specific applications. Evoqua assumes no liability whatsoever for any special, indirect or consequential damages arising from the sale, resale or misuse of its products.



PL 16, 04261 Kerava

© 2023 Evoqua Water Technologies GmbH Subject to change without notice Protegra CS RO EN.PS.0823